

## This month

Revd Daile writes	1
June/July/Yatton Benefice Services	2
Life Support/Safeguarding	3-4
Crafty Vicar/Court de Wyck school	5
Mothers Union/Rev Jo Stobart	6-7
FOCOS Mystery tour/Clav news/ Yatton music Society	8
Helen's Marathon/Pet Service	9
Bickley Tea/Craft Extravaganza	10
Claverham Future/Pentecost	11
Clenrot/Gardens/Useful no'	



## Great Is the Mystery of Faith

When I was a teenager at a church youth group, one of the leaders asked us an interesting question. He said: "Imagine an alien landed on earth and asked you to explain Christianity. How would you describe Jesus and what Christians believe?"

It is not as easy as it sounds. So much of our faith contains mystery. Recently, I was reminded of this while watching the film *The Sheep Detectives*. In one scene, the sheep are wandering around the grounds of a nearby church and begin talking about God. The conversation does a wonderful job of highlighting just how strange and confusing Christianity can sound when heard from the outside:

**Lily:** "What is this?"

**Sebastian:** "This is the church, where someone named God lives."

**Lily:** "Who's God?"

**Sebastian:** "It's a bit confusing. God is a shepherd."

**Mopple:** "So he could be our shepherd?"

**Sebastian:** "No. Because he's also a lamb."

**Lily:** "What?"

**Sebastian:** "And he's also invisible. And he's made of bread. And he damns things."

**Lily:** "Dams things? Like a beaver?"

**Sebastian:** "Yes."

**Lily:** "So God is a big invisible lamb-beaver made of... bread?"

**Sebastian:** "Yes. And they eat him on Sundays."

**Mopple:** "Poor God."



In one of the prayers we use in church, there is the phrase: "Great is the mystery of faith."

I have always loved those words. They remind us that Christianity is not simply about having all the answers. Faith is also about trust, encounter, and experience.

The First Letter of John speaks constantly about love — not simply as words or ideas, but as action. Perhaps the clearest explanation of our faith is not found in complicated theology, but in the way we live our lives.

People may not fully understand who God is, or why we believe in God, and we ourselves may struggle to explain it. But people can recognise kindness, compassion, forgiveness, generosity, and hope.

There is a saying that "a picture paints a thousand words." In the same way, our lives often speak more loudly than our explanations ever could. Perhaps we do not need to have every answer or explain everything perfectly. Perhaps it is enough to live faithfully, love generously, and allow God to work through us.

For, in the end, the greatest witness to our faith may not be our words at all, but the lives we live.

Rev Daile

You are invited to join us.....  
Holy Trinity Cleeve and St Barnabas Claverham

**7<sup>th</sup> June - Holy Trinity**  
**10am Holy Communion**

**14<sup>th</sup> June - St Barnabas**  
**'Patronal Service'**  
**10am Holy Communion**

**21<sup>st</sup> June - Holy Trinity**  
**10am Holy Communion**

**28<sup>th</sup> June - St Barnabas**  
**10am Morning Worship**

**5<sup>th</sup> July - Holy Trinity**  
**10am Holy Communion**

**12<sup>th</sup> July**  
*No service in HT or St B today, as we join with  
Yatton Moor Churches for a group service*

**10am Holy Communion**  
**at St Mary's in Yatton**

**19<sup>th</sup> July - Holy Trinity**  
**10am Holy Communion**

**26<sup>th</sup> July - St Barnabas**  
**10am Holy Communion**

**28th June at Bickley**  
**10am Pet Service**  
**- see poster for  
more details**



**Every Thursday at 9.30am in  
Holy Trinity there is a short service  
of Holy Communion  
or Reflection and Prayer.**

**All are welcome to join us.**  
**For more information**  
**Tel: 01934 904765**

## Midweek Services at Holy Trinity

At 9.30 every Thursday morning apart from 19<sup>th</sup> March which will be at 9am

## Yatton Benefice Services

### 1<sup>st</sup> SUNDAY -7<sup>th</sup> June

8.30am St. John's: BCP Holy Communion

10.00am St. Mary's Yatton:

Morning Prayer

11.00am All Saints': All Together

### 2<sup>nd</sup> SUNDAY - 14<sup>th</sup> June

8.30am All Saints': BCP Holy Communion

10.00am St Mary's: Holy Communion

11.00am St. John's: All Together

### 3<sup>rd</sup> SUNDAY - 21<sup>st</sup> June

10.00am St. Mary's: Morning Prayer

11.00am All Saints' - Holy Communion

### 4<sup>th</sup> Sunday -28<sup>th</sup> June

10.00am St Mary's Holy Communion

11.00am St John's Holy Communion

### 5<sup>th</sup> Sunday 29<sup>th</sup> March

**MID-WEEK SERVICES** on Tuesdays  
and Wednesdays:

8.15am Morning Prayer on Zoom

Contact Mike Cooke for the link.

**Daile writes** - People may be interested in attending the Archdeacons visitation on 7pm **16th June 2026** Portishead All Saints Church, Wraxall.

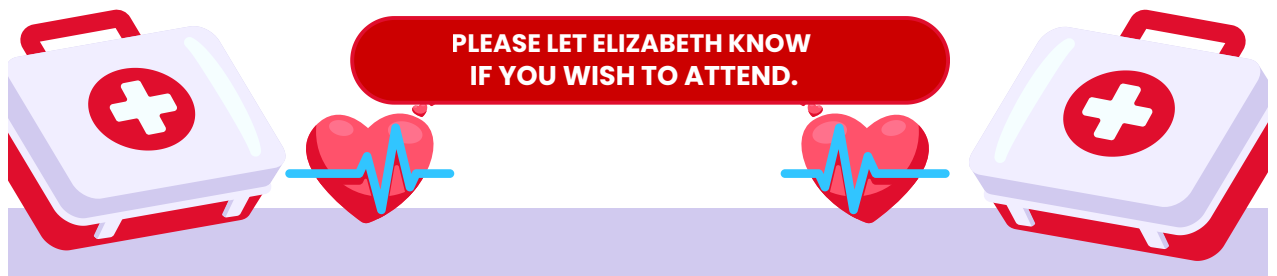
It is for Clergy, Lay Ministers, Church Wardens and members of the PCC.

# BASIC LIFE SUPPORT & DEFIBRILLATOR TRAINING

WEDNESDAY 3<sup>RD</sup> JUNE 2026  
2 - 4 PM  
IN HOLY TRINITY CHURCH HALL

The training session will be lead by Jenny Pascoe and is for all members of Holy Trinity and St Barnabas who would be interested in attending.

It is imperative that at every activity we host in church there is at least one person who is trained in CPR - as we will never know when we might need to use it.



## It's Not Just Policy, it's Personal!

**At the heart** of every safeguarding concern is a human being who has taken a brave and often costly step in speaking about harm.

**Safeguarding** is not simply about compliance with guidance or completing the right forms. It is about people and for those of us who seek to follow Jesus, it is about how we live our faith.

**People** will only feel brave enough to speak about their experiences of harm if they trust in us to respond appropriately.

**How we listen**, how we explain what will happen next, and how carefully we handle what is shared can make a profound difference to whether people feel believed, respected and protected.

**In this edition** of the Messenger we have included a guide, for everyone to keep handy so that we know what to do if anyone feels confident enough to confide in us.

**The four Rs - Recognise, Respond, Record and Refer** - are not tick-boxes. They are a framework that helps us act justly and compassionately, ensuring that concerns are taken seriously and passed to those who can help keep people safe. Doing this well serves both the person who is confiding in us, all who may be involved and the wider community.

**For any concerns or questions regarding safeguarding please contact Jeannie [jeannieosmond@me.com](mailto:jeannieosmond@me.com) or Daile on [dailewilshere@live.co.uk](mailto:dailewilshere@live.co.uk) or 0781055144**

# What To Do When Safeguarding Concerns Arise



Safeguarding concerns can arise in many different situations. When they do, they must be **Recognised, Responded to, Recorded and Referred**.

## SAFEGUARDING CONCERNS MAY ARISE THROUGH



- A disclosure from a child or adult
- Concerns raised by someone else
- Something you witness or observe
- Information shared during conversation
- Information that becomes known during recruitment or safeguarding checks

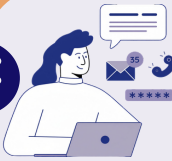
**Always take concerns seriously. Even non-recent abuse must be reported to safeguarding professionals.**



## RECOGNISE

- Be alert to the signs or disclosures of abuse.

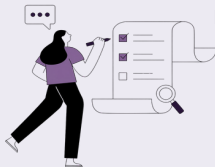
Not everyone will use safeguarding language when they share a concern. A disclosure may be indirect or tentative. If something does not feel right, take it seriously even if you are not certain of what you are hearing.



## RESPOND

- Listen carefully, remain calm and allow the person to speak at their own pace. Do not investigate or ask leading questions.

Do not rush this conversation. Give the person time and space to share what they are ready to share. Let them know gently that as a Church Officer you have a safeguarding responsibility and that what they share may need to be passed on to keep people safe.



## RECORD

- Make a written record of the concern as soon as possible, including what was said, who is involved and relevant details. Records must be signed, timed and dated.

Be open with the person about where their information will be recorded and who may see it. If you need to come back to them for further details, let them know. Clarity at this stage helps people feel respected and informed.



## REFER

- Safeguarding concerns must be referred promptly to the Safeguarding Officer and relevant authorities. If there is immediate risk of harm, contact emergency services without delay.

Where you can, let the person know who the concern is being referred to and why. If there is space, ask whether they have any preferences about next steps. Being heard at this stage matters. Your DSO is there to guide you through what happens next.

## It's Not Just Policy, It's Personal

Building confidence in reporting safeguarding concerns

**RECOGNISE – RESPOND – RECORD – REFER**

[Explore our resources](#)



## Volunteers Wanted

We have been asked if we can support Court de Wyck school by helping to serve refreshments at their Summer Fair on **Saturday 27th June 12-3pm**. If you can help, even for a short while please let Daile know as soon as possible.

*Daile*



## Lego Church

I have also been talking with the school about running one of their Culture Clubs in the autumn. I am hoping to run a Lego Church, showing stop animation Bible stories created from Lego and encouraging the children to make their own story out of Lego.



This will be an opportunity to work with a small group of children. Culture Clubs run on Fridays for half an hour, but with setting up and clearing away you will need to be available 2-3pm. You don't need to be available each week, as if lots of people volunteer, we can share the load. Also wanted, is Lego, if you have any stored away that we can borrow please let me know. I am asking now so that we have time to ensure all the safeguarding requirements are complete. My hope is that if this goes well we can consider running a Lego Church for families in church.

*Daile*

**THE CRAFTY  
VICAR**

Invites you to a day of crafting,  
company and lunch.

**6<sup>th</sup> June 2026  
10-4PM  
AT HOLY TRINITY CHURCH HALL**

**Bring your own crafts to enjoy, and something you  
can share for lunch.**

**Let Daile (or Gill/Lin/June) know if you are coming  
07810551447 or dailewilshere@live.co.uk**

On the 12<sup>th</sup> May Cleeve and Claverham Mother's Union had a lovely day out when they went on their annual outing. They visited Penny Brohn cancer health and well-being centre in Ham Green on the outskirts of Bristol.

The centre helps people living with cancer feel better in mind, body and spirit by offering a choice of personalised cancer care, all free, safe and backed by research. On offer is relaxation sessions and yoga classes, personal consultations, wellbeing days and retreats. They also offer a range of online and in-person services each week. Anyone can turn up to stroll around the gardens, have some reflective time in the Sanctuary, enjoy a cuppa in the Dining Room, have a quiet read in the Sitting Room and much more.

The story began in 1979 when their founder, Penny Brohn, was diagnosed with breast cancer. Penny, who grew up in Bristol, knew instinctively that she needed more than just care and treatment for her body. She recognised that she needed to care equally for her, "mind, spirit, emotions, heart and soul". With her close friend Pat Pilkington, she set out to find what she was looking for. Four years later, Penny and her good friend Pat Pilkington had created the centre so others could access the care Penny had needed.

The Bristol Cancer Help Centre was opened in 1983, with HRH the Prince of Wales becoming their patron in 1997 and he remains so to this day, but of course as King Charles. In 2007, they moved to their current home, a grade II-listed building set in four acres of beautiful gardens. This was made possible thanks to the funding and support of the charity Walk the Walk, a grant-making breast cancer charity, and organisers of the famous Moon Walk.

The highlight of the visit was a walk around the gardens. Two lovely volunteer lady gardeners gave us an interesting guided tour, which I have to say were beautifully maintained and so peaceful.

After a short talk on the history of the centre we finished our visit with a delicious freshly prepared lunch in the restaurant.



*Gill*

#### **Note for your diary-**

On Sunday 14<sup>th</sup> June there will be an NGS open day at Penny Brohn Uk from 10am - 4pm  
Lunch, Cream teas, Cakes, Hot drinks available  
Plants Stall, Stallholders from local makers, Live music and much more

#### **Flower Festival - Advance notice!**



This year is the 150th anniversary of the foundation of the Mothers' Union which was founded in the small parish church of Old Alresford, Hampshire, by Mary Sumner, a young vicar's wife with a bold vision.

In celebration of this event we will be holding a Flower Festival from

**Friday 11<sup>th</sup> - Sunday 13<sup>th</sup> September at Holy Trinity church.**

Further details to follow. *Gill.*

### Deanery Service

Just a reminder that **Cleeve & Claverham MU are hosting the Deanery Service at Holy Trinity Church, Cleeve, on Tuesday 2nd June, starting at 2.30pm.**

There will be a collection, and refreshments will be served after the service. Looking forward to seeing as many of you as possible.

### **Worldwide Lunch**

The Cleeve & Claverham Mothers' Union Worldwide Lunch will be held this year on **Wednesday 17th June**, from 12noon until 2pm in Cleeve Village Hall. This event is open to all.

The meal will consist of a hot jacket potato with a good choice of tasty fillings, various delicious puddings and tea/coffee.

**This popular event is by ticket only, so a call to Lin on 838515 or Gill on 832917** will get you a ticket – priced at just £8.

However, to manage the catering – **a) orders must be made by Wednesday 10th June and b) we need to be advised of vegetarians, vegans and any food allergies, so we can cater for all.**

**Lifts are available**, just ask Gill or Lin when you book.

All proceeds are for the Mothers' Union Worldwide Fund, which enables valuable work to be carried out both in the UK and abroad.

**We need help on the day** - setting up, laying up etc - please let me know if you are able to help. Also **we need a) raffle prizes, and b) we will also be making up a hamper, so anything for that would be appreciated.** Please pass anything on to me, or via a committee member.

Thank you *Lin*



### Toddlers' Picnic

Cleeve and Claverham MU would like to invite babies and toddlers who are under school age, together with their parents/grandparents/carers to come and join us for a picnic in the lawned area at Cleeve Village Hall on **Friday 10th July at 12 noon.**



If you would like to join us for a lovely lunch and fun time, please contact Lin Mortimer on **01934 838515**, no later than Friday 3rd July, to advise her of the number of adults and children requiring food [please leave a message if there is no answer on the phone].

The cost of the lunch for adults is £3. Children are free. Please also advise if any vegetarian meals are required and of any food allergies, so that we can cater for everyone attending.

There is ample parking at Cleeve Village Hall. If the weather looks inclement, the picnic will still go ahead, but we will move inside the Village Hall. We look forward to seeing you there.

### Jo Stobart returns to Wells Diocese!

Many of our readers will remember Jo Stobart who was a curate in the Yatton Team Ministry before she left to be vicar of Ilminster and Whitelackington. She is currently Chaplain to the Bishop of Exeter, but has just been appointed as the new Archdeacon of Wells and Residentiary Canon of Wells Cathedral, returning to the place of her ordination! She will take up her new post in the autumn and I am sure that all here that know her will wish her well in her new appointment.

## FOCOS Mystery Tour 2026

Finalising details for our 2026 Mystery Tour.

### TUESDAY 9TH JUNE

Pick up points –

**9.30am Cleeve** - in lay by next to the shops

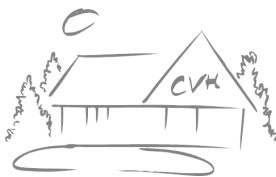
**9.40am Claverham** - bus stop opposite Stream Cross Community Church.

Expected return time – approx. 7.30pm [please note later time]

As usual, lunch and a cream tea are included in the trip. The trip is fully booked, and we have a waiting list, so please let us know if you are unable to attend - 838515 or 832917



## Claverham News



The market at Claverham Village Hall this month will be on **Saturday 20<sup>th</sup> June** from 10-12noon with all the usual local stalls and bustling atmosphere, with refreshments available.

**It was so sad** to hear of the death of Irving Prowse - 'The Bookman' who had a stall at the market for many years and was a very well loved stallholder.. His funeral was held on Friday 29<sup>th</sup> May at St Andrew's church Congresbury. Rest in Peace Irving.

Claverham Ladies' Guild will be in the Village Hall from 2 - 4pm on **Thursday 4<sup>th</sup> June** when there will be a talk on the Territorial Army.

## Forthcoming Yatton Events

### Yatton Music Society



On **4th July at 7.30pm**, the Yatton Music Society will be holding a concert by 'The Mandolinquents' at St Mary's Church. The concert will feature, not only brilliant musicians performing on mandolins, guitar, banjo and in song, but there will be stories and merriment along the way.

The Society is offering a special deal for those who buy a ticket on the night for this concert and also take up YMS membership for 2026/27. For this concert only, the Mandolinquents' concert ticket will also include the YMS annual membership (worth £10/year) and will cost just £15.

Tickets for the concert will also be available on the night, but without annual YMS membership for £16.



The Society will also be holding its Annual General Meeting at 5.30pm St Mary's Chapter House. Those who were members of the YMS during the 2025/26 season will be sent the agenda and other information prior to the meeting.

All current members of the Society are invited to attend the AGM. We look forward to seeing you there.

## TSC LONDON MARATHON

I walked to the start line on that sunny Sunday morning, with the feeling of excitement and nerves in my stomach; It was a warm day to be out on the streets of the capital, tapping out the miles, but it was an absolute privilege.

It's hard to describe the whole experience, but oh wow, - the noise, the signs, the crowds, the displays of friendship and love, were all amazing, the best of humanity.

Did I enjoy it – Yes. Was it tough – Yes. Will I do it again - No thank you, for me it was a once in a lifetime experience.



I am delighted to say I raised £3,805.00 Alzheimer's Research UK – A massive “thank you” to everyone that purchased a cake, pie or quiche at our pop-up stall and/or that sponsored me directly.

*Helen Mortimer*

*Well done Helen - what an achievement and a super amount raised for such a good cause! Ed*

  
 THE CHURCH IN CLEEVE AND CLAVERHAM  
 INVITE YOU TO A  


**PET**  
**SERVICE**




An opportunity to say thank you for the  
 gift of all creatures great and small!  
**Sunday 28<sup>th</sup> June 2026**  
**10am at Bickley,**  
**Main Rd, Cleeve BS49 4NU**

**All pets welcome, and if you can't bring  
 your pet, why not bring a picture of them!**


**Parking is limited. Please contact Elizabeth  
 to reserve a parking space on 07787 781716  
 or for directions. If raining don't worry as we  
 will be in a marquee!**





# An invitation to all in Cleeve and Claverham

There will be a delicious Afternoon Tea event in the lovely surroundings of Bickley on Thursday 2<sup>nd</sup> July, commencing at 2.30pm.



Come along, soak up the ambiance, savour the delicious cakes and scones, enjoy a hot or cold beverage and catch up with all latest happenings, inside the marquee at Bickley.

As you enjoy your afternoon, don't miss the chance to introduce yourselves to the Llamas, and Bickley's other wildlife, whilst looking out over wonderful views of the Bristol Channel into Wales.



To book your place for this popular afternoon out, please ring the FOCOS hotline on either **832917 or 838515** – if our call centre staff are unavailable, please leave a message. The cost for this enchanting afternoon is just £2.50. **Lifts are available – just ask.**

Paul and Renate invite you to their

## Crafts

### and Cream Teas

**12th - 28th June 2026**

11am to 4pm - closed Mondays & Tuesdays

We are once again opening our house & gardens for a Craft Extravaganza! We'll have beautiful hand crafted items made by us and by other local crafts people.

Enjoy homemade cakes and cream teas all day.

**3 Bishop's Mead, Cleeve BS49 4NH**

**Tel - 01934 835141**

**info@woodnthings-uk.com**

All proceeds from refreshments and a percentage from all sales will go to Children's Hospice South West.

There is also a raffle for Cancer Research UK



Registered Charity No. 5003314



As you probably know, two housing developments have been proposed in Claverham, one on the **Claverham Road** backing onto the fields, by Wain homes, and one on the fields opposite St Barnabas on **Claverham High Street** by Latimer/Clarion. Jane Dare from Claverham Future has contacted me to say that the planning permission for 100 houses on land adjacent to the Claverham Road, has been received by North Somerset Council. You can view it here on the North Somerset website, <https://planning.n-somerset.gov.uk/online-applications/applicationDetails.do?activeTab=documents&keyVal=TE01E9LPJH800>

So if you have comments or objections to this housing development, now is the time to make them. **There is only a window of 21 working days** to submit your observations to North Somerset Planning office. This expires on **25<sup>th</sup> June**.

### Cafe Church Pentecost celebration.

Pentecost this year fell on the 4<sup>th</sup> Sunday of May and was celebrated at Cleeve Village Hall at Cafe Church.



We sat round tables for breakfast - bacon rolls, and croissants with butter and jam together with tea/coffee, and browsed the postcards that Daile had put on each table representing an artist's portrayal of the qualities of the Holy Spirit.

The Bible relates how the Holy Spirit came to the early disciples with a rush of strong wind and tongues of fire to empower them in spreading the Gospel of Christ.

We talked about which of the pictures spoke to us and had relevance to our lives, and of times in our lives when we felt guided and strengthened by God's spirit.

It was lovely to have a family table with two little persons joining us with their own activities. Daile administered Communion to us and then sent us off with the help of the children by blessing us with her three-pronged bubble blower, amidst much hilarity!

In June the 4<sup>th</sup> Sunday services will be the Pet Service at Bickley and the 10am at St Barnabas.

You can write online or to North Somerset council quoting -

**Planning Application: 26/P/0872/FUL**

There is to be a meeting in Claverham Village Hall on **Friday 12<sup>th</sup> June from 4 – 8 pm** with an opportunity to ask questions to the Claverham Future group who will also be at Claverham market on 20<sup>th</sup> June.

We are told that the planning permission for the development of 120 houses on **Claverham High Street** will be submitted very soon, and this will be a separate issue and **cannot be commented on** until the application has been received by North Somerset Council.

The issues arising from both of these two applications, however, are similar – the impact of a large number of houses on our community, traffic and road safety issues, flooding and drainage, infrastructure, doctors, schools, public transport etc. **Issues such as loss of view or house value are not considered relevant by the Planning officer. For further info you can email- [ClaverhamFuture.org](mailto:ClaverhamFuture.org) or join the FaceBook Group/ [www.facebook.com/ClaverhamFuture](http://www.facebook.com/ClaverhamFuture)**



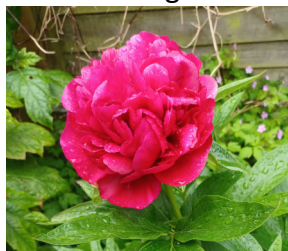
## Holy Trinity Cleaning Rota

Andrea Stoddart Lin Mortimer	June 7th
Enid Pring Ron Pring	June 21st
Kath Hunt Alan Hunt	July 5th
Gill Roe Helen Bailey	July 19th

As I wander round the Perrott estate every morning I am reminded of the verse -

*The kiss of the sun for pardon,  
The song of the birds for mirth, –  
One is nearer God's heart in a garden  
Than anywhere else on earth.*

The transformation from winter to spring to summer is truly magical. I know many Readers feel the same and have given me some wonderful pictures which I am including instead of the usual corny jokes. I am sure this peony could win prizes at Chelsea Flower Show!



This beautiful rose is called 'Peace.' Something the world could do with more of!



And I loved the way this busy bee totally ignored me while I was getting him into focus!

Thanks to Brenda and Chris for the lovely photos. Just room for a garden joke to keep certain people happy! 'My gardener friend turned down a job recently - the celery was too low!'

**Thank you** for your contributions to this month's Messenger. The July edition will be published on the last Sunday of June so any contributions for the next edition should be with me by **Monday the 22<sup>nd</sup> June**. As usual they can be sent on e mail to [carole.perrott@gmx.com](mailto:carole.perrott@gmx.com), put through the door of 15 Chestnut Drive Claverham, or given to me at church.

### Useful Church Contacts

Rector Cleeve & Claverham	Revd Daile Wilshere dailewilshere@live.co.uk	01934 904765 or 07810 551447
Deputy Wardens	Dave & Lin Mortimer	01934 838515
	Elizabeth Vaughan	07787 781716
	Gill Roe	01934 832917
Safeguarding Officer	Jeannie Osmond	01934 832421
Websites	<a href="http://www.achurchnearyou.com/holy-trinity-trinity-cleeve">www.achurchnearyou.com/holy-trinity-trinity-cleeve</a> <a href="http://www.achurchnearyou.com/st-barnabas-claverham">www.achurchnearyou.com/st-barnabas-claverham</a> <a href="http://htcleeve.wixsite.com/cleeve-and-claverham">htcleeve.wixsite.com/cleeve-and-claverham</a>	
Facebook	<a href="https://facebook.com/Cleeve-and-Claverham-Messenger">facebook.com/Cleeve-and-Claverham-Messenger</a>	